

## Unit 6 World History Packet

### Word Wall:

1. Industrial Revolution
2. Cottage Industry
3. Factory System
4. Interchangeable Parts
5. Assembly Line
6. Communism
7. Capitalism
8. Nation
9. Nationalism
10. Imperialism

### People to know:

1. Adam Smith
2. Karl Marx
3. Otto von Bismarck
4. Emperor Meiji
5. Oda Nobunaga
6. Kangxi
7. Commodore Matthew Perry

**SSWH11 Students will investigate political and social changes in Japan and in China from the seventeenth century CE to mid nineteenth century CE**

- a. Describe the policies of the Tokugawa and Qing rulers, include how Oda Nobunaga and Kangxi came to rule for such a long time in China.
- b. Analyze the impact of population growth and its impact on the social structure of Japan and China.

**SSWH14 The student will analyze the Age of Revolutions and Rebellions.**

- d. Examine the interaction of China and Japan with westerners, including the Opium War, the Taiping Rebellion, and Commodore Perry.

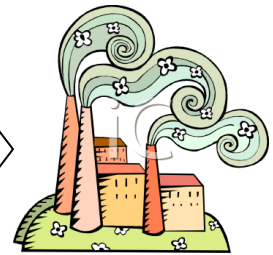
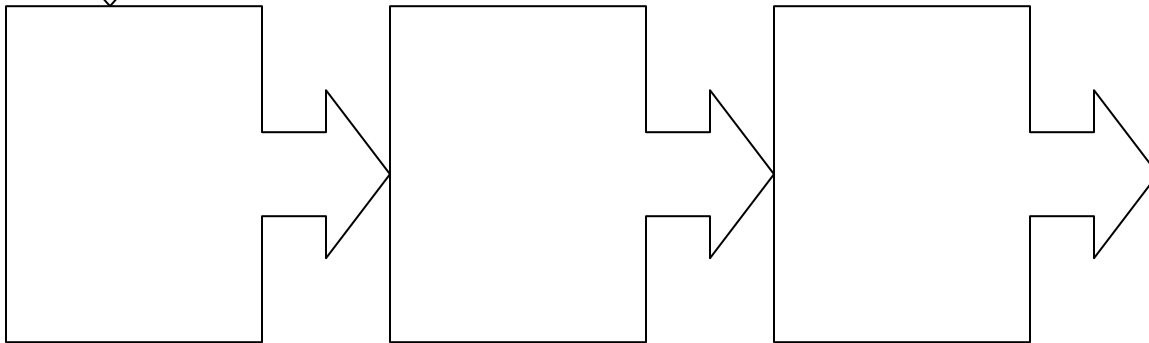
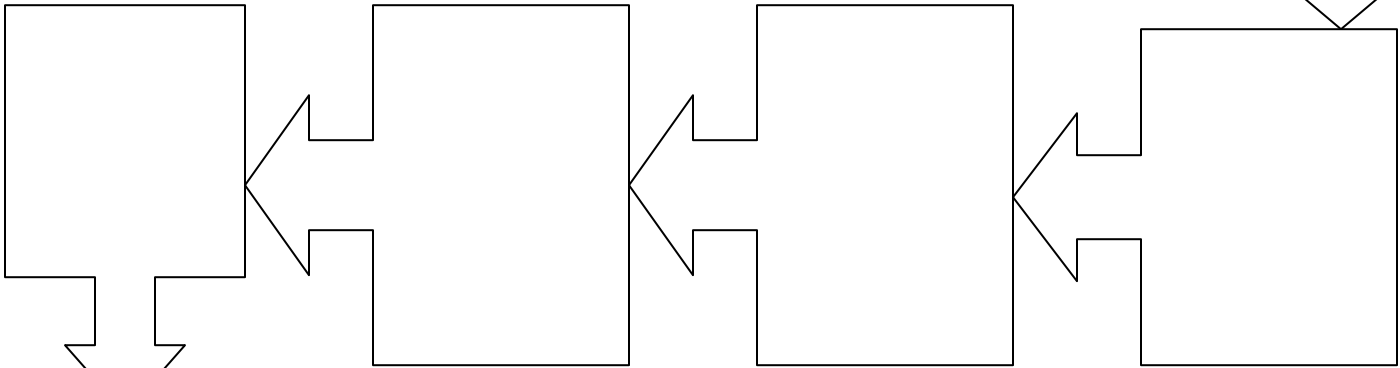
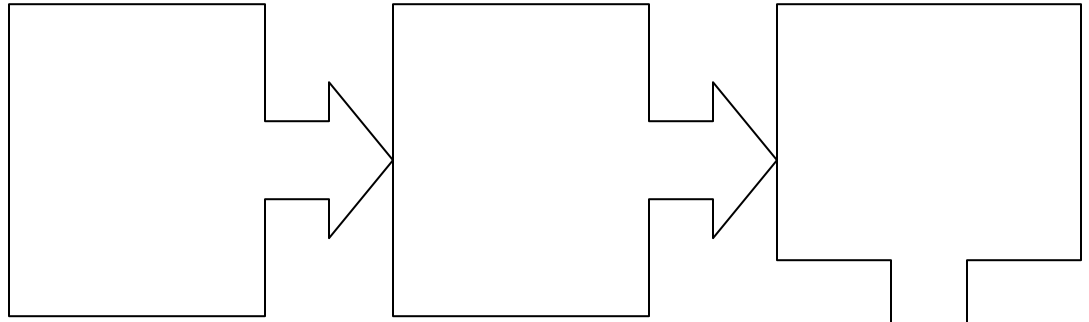
**SSWH15 The student will be able to describe the impact of industrialization, the rise of nationalism, and the major characteristics of world wide imperialism.**

- a. Analyze the process and impact of industrialization in England, Germany, and Japan, movements for political reform, the writings of Adam Smith and Karl Marx, and urbanization and its affect on women.
- b. Compare and contrast the rise of the nation state in Germany under Otto von Bismarck and Japan under Emperor Meiji.
- c. Describe the reaction to foreign domination; include the Russo-Japanese War and Young Turks, and the Boxer Rebellion.
- d. Describe imperialism in Africa and Asia by comparing British policies in Africa, French policies in Indochina, and Japanese policies in Asia; include the influence of geography and natural resources

Geography: Label the following countries: China, India, South Africa, Germany, Great Britain, Vietnam, Japan



## Steps to the rise of the Industrial Age



Factory System

Cottage Industry

| Factory System | Cottage Industry |
|----------------|------------------|
|                |                  |

*EQ: What technological advances were made to spread industry beyond England?*

**Text: Chapter 25 Sec 1**

**Directions:** Use the information in the readings provided by Mr. Hoge to complete this chart

| <b>Invention</b>                                |  |  |  |  |  |
|---|--|--|--|--|--|
| <b>Inventor &amp;<br/>Date of<br/>Invention</b> |  |  |  |  |  |
| <b>Purpose/What<br/>it Does</b>                 |  |  |  |  |  |
| <b>Significance/<br/>Why It's<br/>Important</b> |  |  |  |  |  |

# Economic Theories of the 19<sup>th</sup> and 20<sup>th</sup> Century

**Capitalism**

**Communism**

Advantages:

Disadvantages:

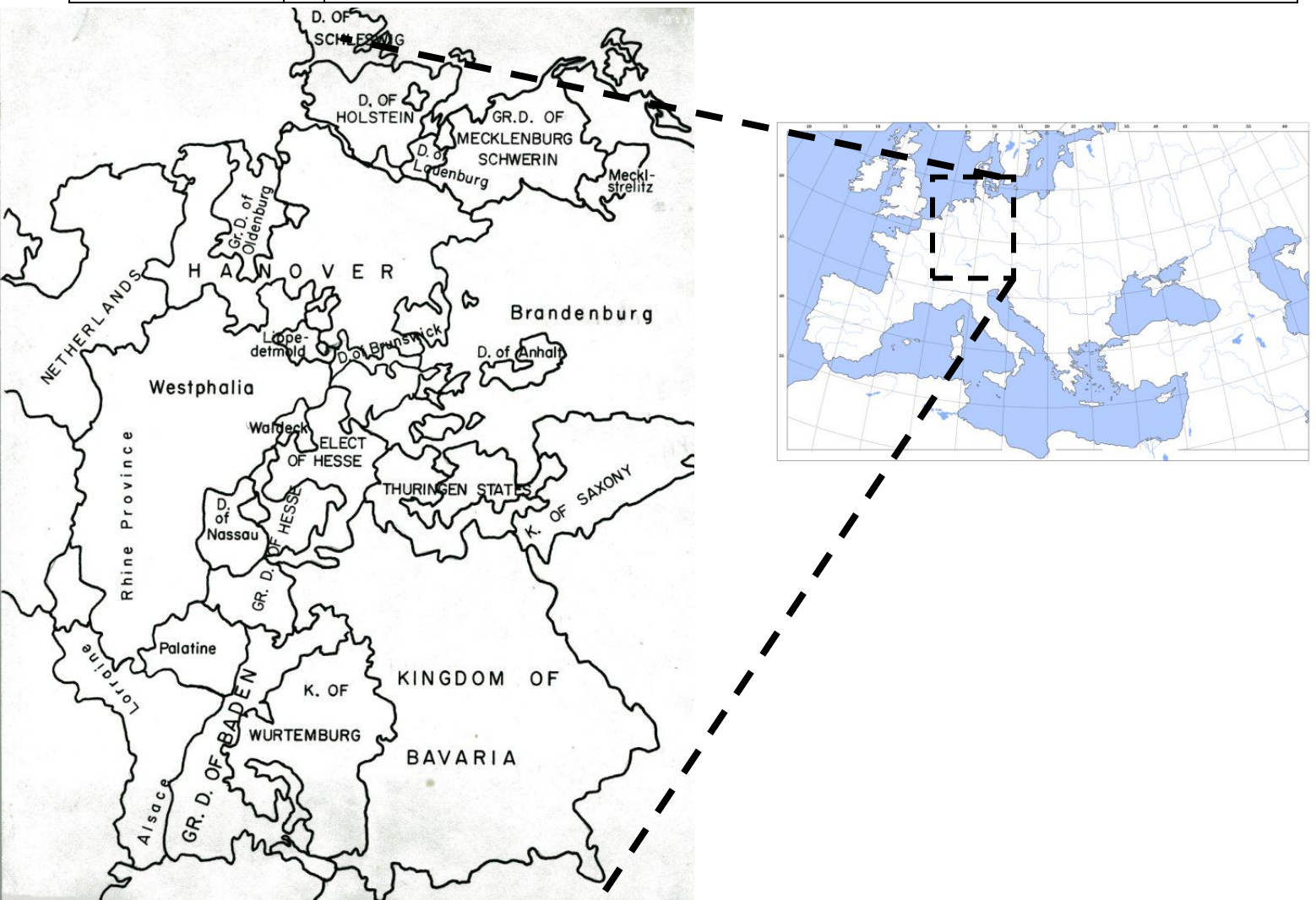
What is Nationalism?

EQ: How can nationalism lead to unity and conflict?

Text: Chapter 24 Sec 2-3

# Nationalism and German Unification

|                      |  |  |
|----------------------|--|--|
| Danish War:          |  |  |
| Seven Weeks War:     |  |  |
| Franco-Prussian War: |  |  |



*EQ: Why did European countries want to take control of Africa?*

Age of Imperialism Around the World

Key Points

**Africa** (Text: Ch. 27 Sec 1)

*EQ: Why did Europeans want to control India?*

**India** (Ch. 27 Sec. 4)

**Indo-China** (Ch. 27 Sec. 5)

*EQ: How did China react to Western influence and imperialism?*

*EQ: How did Japan go from isolation to imperial power?*

**China** (Ch. 19 Sec. 2 & Ch. 28 Sec 1)

**Japan** (Ch. 28 Sec 2)

*EQ: How has imperialism affected developing nations today?*

Create a map of the European, American, and Japanese colonies during the 19<sup>th</sup> and 20<sup>th</sup> centuries. On the large map of the world provided by your teacher color the countries listed below the designated color and create a key at the bottom of the map so that you know which Imperialist country controlled which areas of the world.

**Step One:** Identify the *British* Colonies: Color all of these countries red: Canada, Guyana, Belize, Sierra Leone, Nigeria, South Africa, Botswana, Zimbabwe, Zambia, Malawi, Swaziland, Lesotho, Kenya, Sudan, Egypt, Ghana, Pakistan, India, Sri Lanka, Bangladesh, Burma, Malaysia, Australia, Southern Half of Papua New Guinea, New Zealand, Fiji, Hong Kong, Tibet, Nepal, Along the Chang Jiang River in China, & Shanghai

**Step Two:** Identify the *French* Colonies: Color all of these countries blue: French Guiana, Martinique, Morocco, Algeria, Mauritania, Mali, Niger, Burkina Faso, Senegal, Guinea, Ivory Coast, Benin, Chad, Tunisia, Central African Republic, Gabon, Congo, Madagascar, Laos, Cambodia, Vietnam, Southeast corner of China and New Caledonia

**Step Three:** Identify the *German* Colonies: Color all these countries orange: Togo, Cameroon, Namibia, Tanzania, Northern Half of Papua New Guinea, Marshall Islands, and Tsing Tao in China

**Step Four:** Identify the *Russian* Colonies: Color all of these countries gray: Mongolia, Far Western China, Sakhalin, and Manchuria

**Step Five:** Identify the *Italian* Colonies: Color all of these countries dark green: Libya, Eritrea, and Somalia

**Step Six:** Identify the *Belgian* Colonies: Color all of these countries brown: Democratic Republic of Congo, Uganda, Rwanda, and Burundi

**Step Seven:** Identify the *Dutch* (Netherlands) Colonies: Color all of these countries purple: Indonesia and Surinam

**Step Eight:** Identify the *Portuguese* Colonies: Color all of these countries yellow: Angola, Mozambique, and Guinea-Bissau

**Step Nine:** Identify the *Spanish* Colonies: Color all of these countries black: Western Sahara, and Equatorial Guinea

**Step Ten:** Identify the *United States'* Colonies: Color all of these countries pink: Puerto Rico, Hawaii, Philippines, and Guam

**Step Eleven:** Identify the *Japanese* Colonies: Color all of these countries light green: Korea, Taiwan, and the coast of China just to the west of Taiwan.